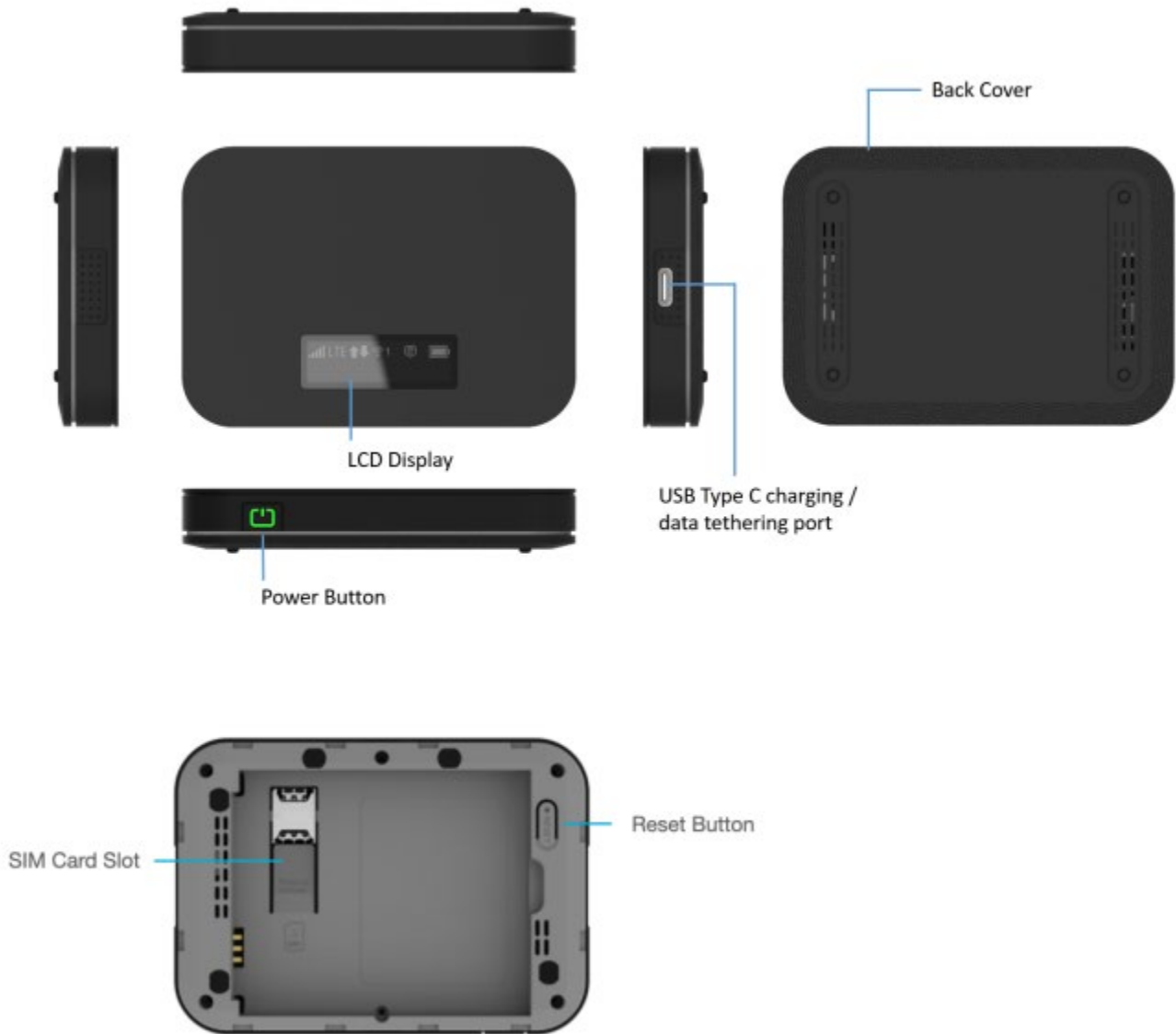






Buttons



Power/Menu Button – Turn on/off Mobile Hotspot. Shows device menu and information

Button Operation

	Operations	Actions
	Turn On	Press and hold the button for 3 seconds.
	Turn Off	Press and hold the button until "Goodbye" message appears.
	Display Wake-Up	When the display is off (sleep mode), the first quick press of the button wakes up the display.
	Info Display	When the display is on, press the button quickly to go through the device menu and information.

	Colors	Charging Status
	Off	Power off.
	Solid	Power off and connected to a charger.
	Blinking	Power on / Operating normally

LCD Display – Provides device status information such as battery, service signal strength, the number of users connected with Wi-Fi etc.

USB Type C Charging / Data Port – The USB charger connects here or USB connection for tethering.

SIM Card Slot – SIM Slot for Nano SIM card. Press down the plastic flap for SIM removal

Battery contact – Insert the battery to align with the battery contacts.

Reset Button – Long press the Reset button while device is turned on. Device will automatically reboot when reset is completed. During this process, battery should not fall out which may brick the firmware.

Device Display



Icons	Description
	4 level signal strength indicators. More bars indicate a stronger signal.
	Networks icon appears depends on which networks connected. (LTE / 3G / Roaming)
	Appears when data is being transmitted between the mobile network and your hotspot.
	Shows the number of connected devices. (1~14 and Max).
	Appears when you have unread messages.
	The bar inside the battery indicates the battery level. When battery power is low, the battery outline blinks.

First time use

Review the steps below if you need help with the setup process.

1. Before using your mobile hotspot, charge the battery fully using the charger that came with your device.
2. Press the **Power/Menu** button for 3 seconds to turn on your device.
3. Turn on your mobile hotspot and your Wi-Fi-enabled device.
4. On your computer or other Wi-Fi enabled device, search for available Wi-Fi networks and select the network name (SSID) located on your mobile hotspot LCD display.
 - Press the **Power/Menu** button shortly when the display is on. The menu will switch every 3 seconds and show you the Wi-Fi name and Wi-Fi password.
5. Connect your Wi-Fi device to your mobile hotspot.